



VALVES

FLOW MANAGEMENT SOLUTIONS Division

Standard Service | Critical Application | High Quality VALVES



DIN/EN Casted valves

- **Type:** Gate, Globe, Check, Butterfly, Ball, Bellow, Self regulated valves, (+).
- **Sizes:** From DN15 to DN1200.
- **Pressure:** From PN10 to PN64.
- **Ends:** Flanged, welded, threaded, wafer, lug, etc.
- **Materials:** Cast iron, stainless steel, brass, (+).
- **Optional:** Soft sealing valves (EPDM, NBR, etc.).
- **Applications:** Water treatment and filtration, power generation, industry, marine, energy, etc.



ANSI Casted valves

- **Type:** Gate, Globe, Check, Butterfly, Ball, Bellow (+).
- **Sizes:** From 1/2" to 72".
- **Class:** From 150# to 2.500#.
- **Ends:** Flanged, welded and threaded.
- **Materials:** Carbon steel, stainless steel, alloy steel, (+).
- **Applications:** Chemical, petro-chemical, refining, oil & gas, water, power generation, marine, etc.



Forged valves

- **Type:** Gate, Globe and Check, Bellow.
- **Sizes:** From 1/4" to 8".
- **Class:** From 800# to 4.500#.
- **Construction:** ASME B16.34, BS 5352, API 602.
- **Ends:** Flanged, socket weld, butt weld, threaded.
- **Materials:** Carbon steel, stainless steel, alloy steel, (+).
- **Special options:** Fully welded, extended body, extended bonnet, (+).
- **Applications:** Petroleum refining and production, offshore, oil & gas, power industry, fertilizer, chemical and desalination, etc.



Butterfly valves

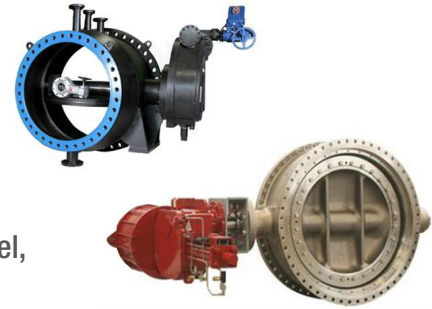
- **Types:** Centred and single offset.
- **Sizes:** From 1 1/4" to 138".
from DN32 to DN3000.
- **Class:** From 150# to 300#.
from PN6 to PN100.
- **Ends:** Wafer, lug, flanged.
- **Materials:** Carbon steel, stainless steel and other alloys, (+).





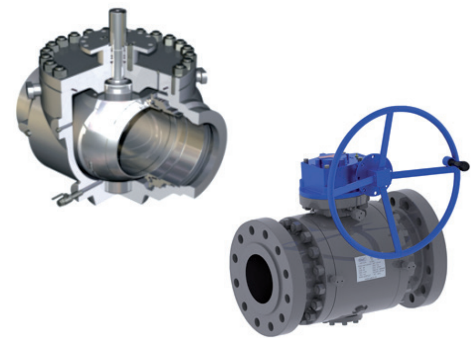
High Performance Butterfly valves

- **Types:** Double and triple eccentricity.
- **Sizes:** From 2" to 160".
from DN50 to DN2000.
- **Class:** From 150# to 2.500#.
from PN10 to PN200.
- **Construction:** Metal to metal closure, zero leakage, fire safe.
- **Ends:** Wafer, lug, flanged and welded, (+).
- **Materials:** Carbon steel, stainless steel, alloy steel, duplex, inconel, hastelloy, etc.



Trunnion Mounted Ball valves

- **Type:** Side entry and Top entry.
- **Sizes:** From 1" to 60".
from DN50 to DN200.
- **Class:** From 150# to 2.500#.
from PN6 to PN400.
- **Construction:** ASME B16.34, API 6D, ISO 17292;
soft and metal to metal seats; casted and forged body.
- **Ends:** Flanged, welded, (+).
- **Materials:** Carbon steel, stainless steel, alloy steel, bronze, duplex, superduplex, etc.



Floating Ball valves

- **Sizes:** From 1/2" to 8".
from DN15 to DN300.
- **Class:** From 150# to 600#.
from PN16 to PN40.
- **Construction:** ASME B16.34, API 6D, API 608, BS 5351;
soft and metal-to-metal seats; forged and casted body.
- **Ends:** Flanged, welded and threaded.
- **Materials:** Carbon steel, stainless steel, alloy steel, bronze, brass, duplex, superduplex, etc.



Knife Gate valves

- **Sizes:** From 2" to 36".
from DN50 to DN1200.
- **Pressure:** From 150# to 900#
from PN6 to PN100
- **Closure:** Soft and metal to metal.
- **Ends:** EN 1092, ANSI B16.5, (+).
- **Materials:** Cast iron, carbon steel, stainless steel, (+).
- **Applications:** Water treatment services, mining, solid particles services, paper industry and other industrial processes.



Dual Plate Check valves

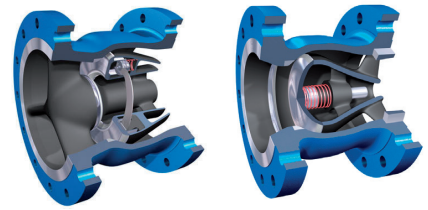
- **Sizes:** From 2" to 80".
from DN40 to DN1200.
- **Class:** From 150# to 2.500#.
from PN10 to PN250.
- **Construction:** Soft seat and metal to metal seat, casted and forged body.
- **Ends:** Wafer, lug, hub, flanged and welded.
- **Materials:** Carbon steel, stainless steel, cast iron, (+).





Nozzle Check valves

- **Sizes:** From 1" to 88".
from DN25 to DN2200.
- **Class:** From 150# to 2.500#.
from PN16 to PN400.
- **Ends:** Wafer, lug, hub, flanged, welded and threaded.
- **Construction:** Non-slam, soft and metal to metal seats, fire safe, forged and casted body.
- **Materials:** Carbon steel, stainless steel, cast iron, (+).



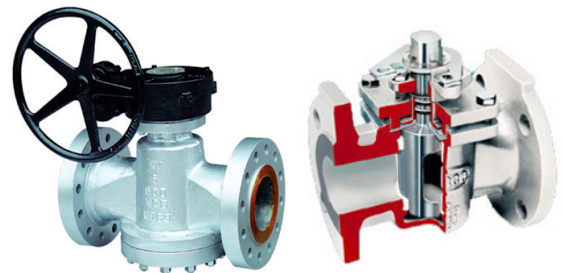
Safety / Pressure Relief valves

- **Sizes:** From 1/2" to 20".
from DN15 to DN500.
- **Class:** From 150# to 2.500#.
from PN16 to PN200.
- **Ends:** Flanged, welded, threaded.
- **Construction:** Forged and casted body.
- **Materials:** Carbon steel, stainless steel, cast iron, (+).
- **Applications:** Steam, gases, vapours and liquids. Cryogenic services.
- **Options:** Open bonnet, soft seat, bellow, lifting device, sealed packing lever, etc.



Plug valves

- **Type:** Lubricated and non-lubricated plug valves.
- **Sizes:** From 1/2" to 36".
from DN15 to DN500.
- **Class:** From 150# to 2.500#.
from PN16 to PN40.
- **Ends:** Flanged, welded and threaded.
- **Materials:** Carbon steel, stainless steel, alloy steel, cast iron and other alloys, duplex, superduplex, (+).



Double block & bleed (DBB) plug valves

- **Type:** Double expanding plug valve.
- **Sizes:** From 2" to 36".
- **Class:** From 150# to 600#.
- **Construction:** Full or reduced bore, fire safe. It allows in-line maintenance.
- Zero leakage.
- **Ends:** Flanged.
- **Materials:** Carbon steel and alloy steel, (+).
- This valve has emerged as the industry standard for movement and storage of petroleum products in refineries, tank farms and terminals.



Diaphragm valves

- **Size:** From 1/4" to 12"
from DN 15 to DN 300.
- **Pressure:** max. permissible pressure 16 bar.
- **Temperature:** max. permissible temperature 160°C.
- **Ends:** Flanges, welded BW and SW, the screwed.
- **Materials:** Cast Iron and Ductile Iron, Stainless Steel, Bronze, (+).
- **Lining:** Ebonite, Butyl, PTFE/TFM, Polyamide, Halar (ECTFE)
- **Diaphragm:** EPDM, Nitrile, Butyl, TFM, CSM (Viton)
- **Applications:** Chemical Industry, mining, water treatments, Paper and cellulose industry, Sugar Industry, Acids and Alkaline Fluids, Chlorine Processes, etc.





Pinch valves

- **Sizes:** From 2" to 20"
from DN50 to DN500.
- **Pressure:** From 10 Bar to 200 Bar.
- **Construction:** ASTM A536 60-40-18, BS2789 420-12, SABS936 SG42, DIN1693 GGG40. Open and close frame.
- **Temperature:** Up to 120°C.
- **Operation:** Hand wheel, gearbox and actuator (electric, pneumatic or hydraulic).
- **Applications:** These valves are designed to handle abrasive and corrosive fluids, in high and low pressure, such as minerals, ash, pulp, chemical products, etc.



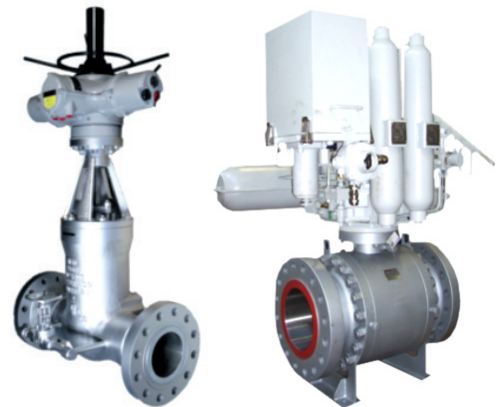
Control valves

- **Type:** Globe control valve, (+).
- **Sizes:** From ½" to 42"
from DN15 to DN400.
- **Class:** From 150# to 4.500#.
from PN16 to PN200.
- **Construction:** Casted and forged body.
- **Materials:** Carbon steel, stainless steel, alloy steel, cast iron, duplex, special alloys, (+).



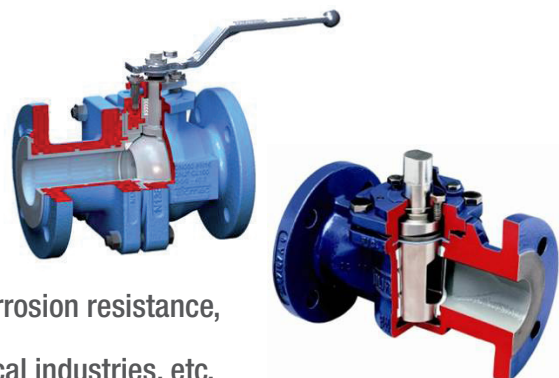
On-Off valves

- **Type:** Ball, Gate, Globe, Butterfly, Plug, Knife, ...
- **Sizes:** From ½" to 80"
from DN15 to DN2000.
- **Class:** From 150# to 4.500#.
from PN16 to PN200.
- **Construction:** Casted and forged body.
- **Actuators:** Multiturn and quarter turn electric actuators, pneumatic actuators (rack & pinion, scotch yoke), hydraulic actuators, gas over oil actuators.
- **Extras:** Additional equipments can be supplied as actuator passive fire protection, local control panel, air tank and so on.
- **Materials:** Carbon steel, stainless steel, alloy steel, cast iron, duplex, superduplex, exotic alloys, (+).



Lined valves

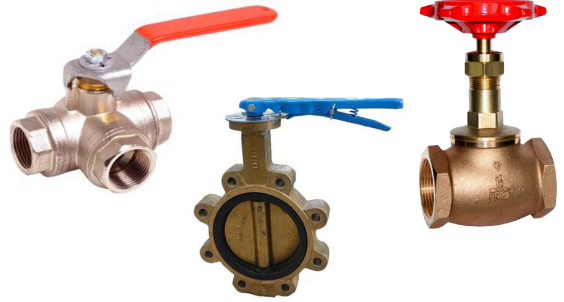
- **Types:** Ball, Plug, Check, Butterfly.
- **Sizes:** From ½" to 12"
from DN10 to DN500.
- **Class:** From 150# to 300#.
from PN16 to PN25.
- **Construction:** Internally lined valves with PFA, FEP, PP, PTFE, etc. Internal line can cover all wetted parts of the valve.
- **Advantages:** Lower operating torques, zero leakage, corrosion resistance, prevention of fluid contamination.
- **Applications:** Paper, cosmetics, pharmaceutical, chemical industries, etc.





Bronze and Brass valves

- **Type:** Ball, Gate, Globe, Check, Butterfly, Plug, Needle, Filters,...
- **Sizes:** From ½" to 24".
from DN8 to DN600.
- **Class:** From 150# to 300#.
from PN10 to PN40.
- **Ends:** Flanged, threaded, wafer, lug, welded.
- **Applications:** Water distribution, cooling and heating, wastewater, sanitary, compressed air, etc.



Thermoplastic valves

- **Type:** Ball, Diaphragm, Butterfly, Check, Vent and Bleed, Pressure regulation, Filters, Angle valves, etc.
- **Sizes:** From DN10 to DN300.
- **Class:** From PN8 to PN16.
- **Ends:** Flanged, welded, threaded, lug, wafer.
- **Materials:** PVC, polypropylene, ABS, PVDF, etc.
- **Applications:** Water works and sea water, industry, chemical processes, mining, gas distribution, etc.



Pressure Seal valves

- **Type:** Gate, Globe and Check.
- **Sizes:** From 2" to 48".
- **Class:** From 900# to 2.500#.
- **Design:** ASME B16.34, EN 12516, etc.
- **Ends:** Flanged and butt weld.
- **Materials:** Carbon steel, stainless steel, alloy steel, duplex, super duplex, exotic alloys, (+).
- Recommended for high pressure applications.



Valves for HF Alkylation

- **Type:** Gate, Globe and Check.
- **Sizes:** From ½" to 36".
- **Class:** From 150# to 800#.
- **Construction:** API 600 and 602, fire safe design, low emissions according to API 622 and ISO 15848, acid detecting paint.
- **Materials:** Carbon steel and monel, forged and casted.



Instrumentation valves and Manifolds

- **Type:** Ball, Needle, Relief, Check, Plug, Manifolds, etc.
- **Sizes:** From 1/8" to 2".
- **Pressure:** From 1000 psi to 60.000 psi.
- **Ends:** Threaded, flanged, quick connections, welded.
- **Materials:** Stainless steel.





Cryogenic valves

- **Type:** Ball, Gate, Globe, Check, Butterfly, Control, etc.
- **Size:** From 1" to 48"
from DN15 to DN500.
- **Class:** From 150# to 900#
from PN16 to PN40.
- **Temperature:** From -196°C to +200°C
- **Ends:** Flanged, welded, (+).
- **Materials:** Stainless steel, (+).
- **Applications:** Very low temperature services, cryogenic, LNG, etc.



OTHER PRODUCTS OF FLOW MANAGEMENT SOLUTIONS Division

Filters & Filtration Products

WET MEDIUM

Membrane



Cartridge/Bag



Basket



Self-clean

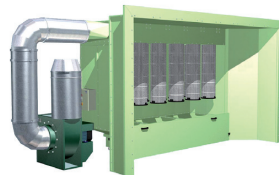


Other

- Sand Filters
- Centrifugal separators
- Hydraulics

DRY MEDIUM

Dust treatment



Air treatment



Oil mist separators



Other

- Pneumatics
- Gas transfer

For further information see our catalogue of Filters F01-16.



Calle Camino del Olivar, 2 (Esquina Calle México)
28806 Alcalá de Henares, Madrid (SPAIN)
Tel: (+34) 91 887 87 00 - Fax: (+34) 91 887 87 33
info@grupocunado.com - www.grupocunado.com

SPAIN

ANDALUCÍA: SEVILLA, HUELVA & ALGECIRAS (+34) 955.63.06.12 - andalucia@cunado.com
ARAGÓN: ZARAGOZA (+34) 976.18.52.58 - aragon@cunado.com
CANARIAS: LAS PALMAS & TENERIFE (+34) 928.70.05.00 - canarias@cunado.com
CASTILLA LA MANCHA: PUERTOLLANO (+34) 926.46.00.55 - clm@cunado.com
CASTILLA Y LEÓN: VALLADOLID (+34) 983.52.86.00 - ventascastillaleon@cunado.com
CATALUÑA: BARCELONA, GERONA & TARRAGONA (+34) 93.575.24.24 - cataluna@cunado.com
GALICIA: VIGO (+34) 986.34.26.06 - galicia@cunado.com
LEVANTE: VALENCIA & CARTAGENA (+34) 96.181.92.00 - levante@cunado.com
MADRID: (+34) 91.887.87.00 - madrid@cunado.com
NORTH: BILBAO & GIJÓN (+34) 94.453.31.54 - norte@cunado.com

INTERNATIONAL

CTA, LDA. (PORTUGAL): (+351) 217.995.280 - info@cta.pt
CUINTER (CHILE): (+56) 2.2787.0300 - mail@cunado.cl
CUÑADO ASIA CORPORATION (CHINA): (+86) 21.2024.8130 - info@cunadoasia.com
CUÑADO BOLIVIA: (+591) 3.3110683 - bolivia@grupocunado.com
CUÑADO BORU (TURKEY): (+90) 262.37.37.014 - info.turquia@grupocunado.com
CUÑADO CANADA: info.canada@grupocunado.com
CUÑADO COLOMBIA: (+51) 320.532.2498 - info.colombia@grupocunado.com
CUÑADO DUBAI (UAE): info.dubai@grupocunado.com
CUÑADO MEXICO: (+52) 55.5254.04.05 - cumex@prodigy.net.mx
CUPERSA (PERU): (+51) 141.662.00 - info@cupersa.pe
CUVENSА (VENEZUELA): (+58) 241.871.75.06 - finanzas@cuvensa.com
FLABOFORM GMBH (GERMANY): (+49) 7254 9271 0 - info@flaboform.de
ITF, INC. (USA): (+1) 713.952.4111 - itfinc@cunadousa.com
OMEGA INDUSTRIAL (USA): (+1) 225.749.9808 - info@omega-industrial.com
RAGENSA (PERU): (+51) 141.662.00 - info@cupersa.pe



www.grupocunado.com