

Food and Pharmacy







Introduction

Grupo Cuñado was created in 1963 and consists of a group of companies dedicated to the manufacture and supply of pipes, valves, filters, and miscellaneous accessories for any type of industry. Grupo Cuñado has an extensive network of offices and warehouses worldwide.

The philosophy of **Grupo Cuñado** is the specialisation in every market to provide the best service. It is a global company that also operates locally, and therefore has specific areas for each product, in order to offer the best technical service to its clients.

Grupo Cuñado has had a comprehensive growth within the **FOOD AND PHARMACEUTICAL** industry. Grupo Cuñado's and our client's range of products complement each other, becoming a global supplier within the sector of food and pharmaceutical equipment.



BRANDS WE REPRESENT

Cuñado has a wide range of products and brands to meet any need from the Pharmaceutical, Food, Cosmetics and Chemical Industry. Our technicians will put their expertise at work in order to decide which is the best solution that meets your needs, and we continue working to expand our product portfolio.





Alfa Laval is a worldwide supplier and leader in the manufacturing of specialised products and engineering solutions.

Its equipment, systems and services are oriented towards the improvement of its customer's processes.

A wide portfolio of products is available for the client: pumps, valves, heat exchangers, tank equipment, fittings and pipes, etc. They supply what the customer needs, from standard components to custom solutions.

Its operations focus on three key technologies: heat transfer, separation and fluid handling.

They assist their clients in the heating, cooling, separation and transportation of chemical products, drinks, food, starch and pharmaceutical products.

Its worldwide organization works closely with customers in nearly 100 countries, providing advice so that they remain at the forefront.





It focuses on the manufacture of agitators, online mixers and complete mixing facilities.

Since 1972, its aim has been to offer global solutions to the processes of liquid-liquid and solid-liquid mixtures for a wide range of sectors such as the food and chemical industries, pharmaceutical, biotechnology and cosmetics.

Engineering and product processes are carried out so that the customer ensures that the technological solution offered is optimal for mixing processes, from a process, mechanical and automation point of view.

Always active since 1972, they are dedicated to research, develop and innovate both processes and products, becoming technology experts in liquid-liquid and solid-liquid mixtures.

They make their know-how available to the client, as well as modern infrastructure and qualified staff with extensive experience providing a comprehensive solution to the mixing, applying its broad range of agitators, in line mixers and complete mixing facilities.

The food, chemical, cosmetics and pharmaceutical sectors use the technology of Vak Kimsa to resolve its applications. The quality of their mixers is as excellent as their product.





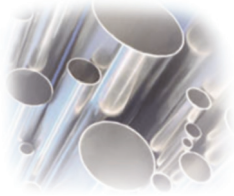
Merck is a pharmaceutical and chemical global company with around 40,000 workers in 68 countries.

The Pharmaceuticals business sector consists of innovative prescription drugs and OTC products. The Chemical business sector offers specific products used in the pharmaceutical and biotechnological industry, as well as art, cosmetics and food. The business activities are managed by Merck KGaA, headquartered in Darmstadt (Germany).

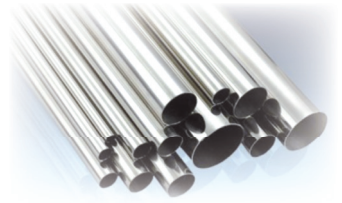
Merck Millipore's long contribution to efficient sample preparation technologies through innovative filtration through membranes is renowned in the industries of life sciences, food analysis and beverages, cosmetics and others. Because their products provide consistent results and excellent quality, many researchers specified and standardised methods of sample preparation with Merck Millipore membranes and filters.

No matter the application of beverages, effective microbial management is essential to ensure high quality products that meet the stringent regulatory requirements around the world. Its complete line of filters combined with years of experience makes sure that products are free from microbes and other contaminants.





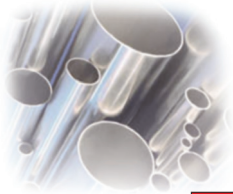
Pipe DIN-11850 Food Quality 304L / 316 L



External diameter (mm)	Thickness (mm)	Nominal	Range	Norm
12.00	1.00	DN 10	Range 1	DIN 11850
18.00	1.00	DN 15	Range 1	DIN 11850
22.00	1.00	DN 20	Range 1	DIN 11850
28.00	1.00	DN 25	Range 1	DIN 11850
34.00	1.00	DN 32	Range 1	DIN 11850
40.00	1.00	DN 40	Range 1	DIN 11850
52.00	1.00	DN 50	Range 1	DIN 11850

External diameter (mm)	Thickness (mm)	Nominal	Range	Norm
13.00	1.50	DN 10	Range 2	DIN 11850
19.00	1.50	DN 15	Range 2	DIN 11850
23.00	1.50	DN 20	Range 2	DIN 11850
29.00	1.50	DN 25	Range 2	DIN 11850
35.00	1.50	DN 32	Range 2	DIN 11850
41.00	1.50	DN 40	Range 2	DIN 11850
53.00	1.50	DN 50	Range 2	DIN 11850
70.00 *	2.00	DN 65	Range 2	DIN 11850
85.00 *	2.00	DN 80	Range 2	DIN 11850
104.00 *	2.00	DN 100	Range 2	DIN 11850
129.00 *	2.00	DN 125	Range 2	DIN 11850
154.00 *	2.00	DN 150	Range 2	DIN 11850
204.00 *	2.00	DN 200	Range 2	DIN 11850

External diameter (mm)	Thickness (mm)	Nominal	Range	Norm
12.0 *	1.50	DN 10	Range 1	DIN11850 Old
18.0 *	1.50	DN 15	Range 1	DIN11850 Old
22.0 *	1.50	DN 20	Range 1	DIN11850 Old
28.0 *	1.50	DN 25	Range 1	DIN11850 Old
34.0 *	1.50	DN 32	Range 1	DIN11850 Old
40.0 *	1.50	DN 40	Range 1	DIN11850 Old
52.0 *	1.50	DN 50	Range 1	DIN11850 Old



Pipe Norm SMS 304L / 316L



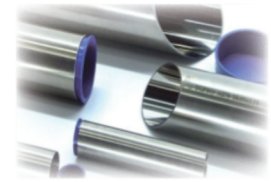
External diameter (mm)	Thickness (mm)	Nominal	Norm
25.00	1.20	1"	SMS3008
32.00	1.20	1 1/4"	SMS3008
38.00	1.20	1 1/2"	SMS3008
51.00	1.20	2"	SMS3008
63.50	1.60	2 1/2"	SMS3008
76.10	1.60	3"	SMS3008
101.60	2.00	4"	SMS3008

Superficial finishes DIN-11850 / SMS

	INTERNAL SURFACE	EXTERNAL SURFACE
CC	STRIPPING, RA<0.8, WELDING RA<1.6	STRIPPING
CD	STRIPPING, RA<0.8, WELDING RA<1.6	SANDING RA<1.0
BC	RED HEATED AND STRIPPED OR BRIGHT ANNEALING, RA <0.8 WELDING RA <1.6	HEATER AND STRIPPED, BRIGHT ANNEALING
BD	RED HEATED AND STRIPPED OR BRIGHT ANNEALING, RA <0.8 WELDING RA <1.6	SANDING RA<1.0

* Permanent stock

Pipe DIN-11866 Range A / 304L - 316L



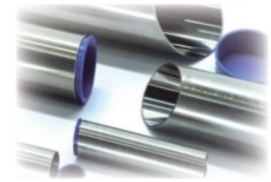
External diameter (mm)	Thickness (mm)	Nominal	Range	Norm
8.00	1.00	DN 6	R.A	DIN 11866
10.00	1.00	DN 8	R.A	DIN 11866
13.00	1.50	DN 10	R.A	DIN 11866
19.00	1.50	DN 15	R.A	DIN 11866
23.00	1.50	DN 20	R.A	DIN 11866
29.00	1.50	DN 25	R.A	DIN 11866
35.00	1.50	DN 32	R.A	DIN 11866
41.00	1.50	DN 40	R.A	DIN 11866
53.00	1.50	DN 50	R.A	DIN 11866
70.00	2.00	DN 65	R.A	DIN 11866
85.00	2.00	DN 80	R.A	DIN 11866
104.00	2.00	DN 100	R.A	DIN 11866
129.00	2.00	DN 125	R.A	DIN 11866
154.00	2.00	DN 150	R.A	DIN 11866
204.00	2.00	DN 200	R.A	DIN 11866

Pipe DIN-11866 Range B / 304L - 316L

External diameter (mm)	Thickness (mm)	Nominal	Range	Norm
10.20	1.60	DN 6	R.B	DIN 11866
13.50	1.60	DN 8	R.B	DIN 11866
17.20	1.60	DN 10	R.B	DIN 11866
21.30	1.60	DN 15	R.B	DIN 11866
26.90	1.60	DN 20	R.B	DIN 11866
33.70	2.00	DN 25	R.B	DIN 11866
42.40	2.00	DN 32	R.B	DIN 11866
48.30	2.00	DN 40	R.B	DIN 11866
60.30	2.00	DN 50	R.B	DIN 11866
76.10	2.00	DN 65	R.B	DIN 11866
88.90	2.30	DN 80	R.B	DIN 11866
114.30	2.30	DN 100	R.B	DIN 11866
139.70	2.60	DN 125	R.B	DIN 11866
168.30	2.60	DN 150	R.B	DIN 11866
219.10	2.60	DN 200	R.B	DIN 11866

Pipe DIN-11866

Range C / 304L - 316L



External diameter (mm)	Thickness (mm)	Nominal	Range	Norm
6.35	0.89	DN 8	R.C	DIN 11866
9.53	0.89	DN 10	R.C	DIN 11866
12.70	1.65	DN 15	R.C	DIN 11866
19.05	1.65	DN 20	R.C	DIN 11866
25.40	1.65	DN 25	R.C	DIN 11866
38.10	1.65	DN 40	R.C	DIN 11866
50.80	1.65	DN 50	R.C	DIN 11866
63.50	1.65	DN 65	R.C	DIN 11866
76.20	1.65	DN 80	R.C	DIN 11866
101.60	2.11	DN 100	R.C	DIN 11866
152.40	2.77	DN 150	R.C	DIN 11866

Hygiene level for Din-11866 pipes

HYGIENE	INTERNAL SURFACE	INTERNAL WELDING
H1	RA<1.6	RA<3.2
H2	RA<0.8	RA<1.6
H3	RA<0.8	RA<0.8
H4	RA<0.4	RA<0.4
H5	RA<0.25	RA<0.25

Asme Pipe BPE / 316L - SF1 / SF4

External diameter (mm)	Thickness (mm)	Nominal	Norm
6.35	0.89	1/4"	ASME BPE
9.53	0.89	3/8"	ASME BPE
12.70	1.65	1/2"	ASME BPE
19.05	1.65	3/4"	ASME BPE
25.40	1.65	1"	ASME BPE
38.10	1.65	1 1/2"	ASME BPE
50.80	1.65	2"	ASME BPE
63.50	1.65	2 1/2"	ASME BPE
76.20	1.65	3"	ASME BPE
101.60	2.11	4"	ASME BPE
152.40	2.77	6"	ASME BPE

Joins, flanges and clamps

To maintain the highest quality, it is important that the installation is homogeneous. To do so, we carefully control the tolerances and finishes. Grupo Cuñado always applies the latest advances in relation to standards.

In order to offer the best rubber joint for your process, we have several options in addition to the standard joints, including the following:

- NBR, nitrile rubber.
- FPM, fluoro rubber.
- EPDM, ethylene propylene.

These flanges and clamps allow flexible and easy maintenance. Models for flanges and clamps with wing nuts are especially suitable for processes in which the joints suffer a heavy load, and it is necessary to control and easily replace joints.

We have joints for a number of standards, such as SMS, ISO, BS, IDF, DS, DIN and clamps.



Elbows, T-joints and reductions

At Grupo Cuñado we know that the quality of the welding is under increasing demands.

To meet this challenge, all our reductions meet the highest quality standards.

Reductions have cylindrical welding ends, and are available for any combination of pipes, to ensure you always have the diameter and wall thickness suitable for processing.

Tolerances

We guarantee that all the angles are correct and that all elbows and tees are uniform. It is very important that our customers do not have to compensate for any irregularities.

Finishes

So that you can always choose a finish that exactly matches the processes, we provide a wide range of finishes, such as matte, untreated, bright and polished.



Pharma

The Pharma range is designed to meet the strict specifications imposed by the biotech and pharmaceutical industries. The polished finish of the interior surfaces, with $Ra=0.4$, meets the high quality requirements of these applications. The finishing of the exterior surfaces is $Ra=0.8$.

- Available in standard sizes DIN, ISO1127 and ASME BPE 1997.
- Ready for orbital welding.
- All ends are protected by caps to ensure the good condition of the edges during welding.
- Individually packed.
- Supplied with traceable documentation.



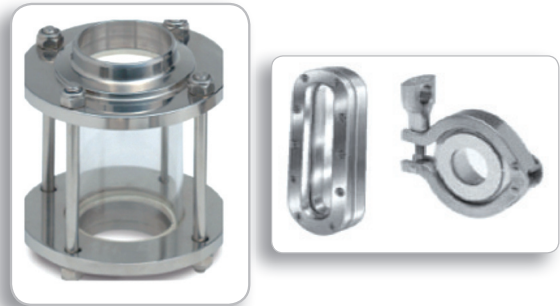
Tank covers

Stainless steel manhole covers are used in tanks or containers including bottling machines and washing machines. The products are suitable for a variety of sanitary applications such as wine, beverages, dairy products and food. They are designed to close the access to the interior of a container, located on or below the liquid level. The cover is offered in oval, circular and rectangular shapes for different applications.



Peep-holes

Peep-holes are accurate gauge glasses that allow a direct, undistorted view of process conditions, products, fluid and cleaning levels inside the containers used in biopharmaceutical industries, dairy industries, food and beverages.



Retention valves

The standard range of LKC-2 non-return valves are constructed out of standard 304 or stainless steel acid-resistant 316L. Easy to install, the valves are designed to handle the product's high pressure of up to 10 bar, and temperatures ranging from -10 ° C to 140 ° C (EPDM). For better versatility, these valves are available with a semi-gloss, polished finish, and a variety of welded ends for ISO or DIN connections.



Cleaning heads

Designed for hygiene, biotechnology and pharmaceutical applications. Toftjorg cleaning devices for rotating injection head tanks provide easy cleaning, better product quality, and increased global production and reduced operating costs.



Our portfolio of products is very wide; ask for information regarding any type of material or equipment not found in this catalogue.



Butterfly Valves (CBFV) are ON / OFF routing valves designed for manual or automatic operation systems fluid handling of sanitary stainless steel. Easy to set-up.



Sanitary ball valves feature a full port design which allows total fluid flow with minimal drop of pressure, making it ideal for handling viscous liquids or liquids containing particles within the food, beverages, chemicals and pharmaceutical industries.



The range of butterfly valves consists of modular units designed to meet the full range of requirements for working pressures from full vacuum to 10 bar. All valves are FDA compatible, designed to be used in a wide range of systems of stainless steel pipes.



Intake CPM valves are used to maintain uniform output pressure in the lines of hygienic process for the dairy products and food industry as well as beverages. These control valves provide precise control of pressure, with safe, reliable performance and excellent cleaning.



The UltraPure sphere Valve range includes models ISO 2037, ASME BPE and DIN 11850, in a wide range of dimensions. The valves have a maximum temperature of 150 ° C and a maximum working pressure of 40 bars.



2 LKUV air relief valves are designed to be used when air evacuation of a process line without product loss is a primary concern. These provide solid security and efficiency at a low cost of ownership for processing, where hygiene standards are essential.



UltraPure diaphragm valve meets the requirements of the majority of ultra-sterile and hygienic processes. These valves have a compact and lightweight modular design, enabled for a wide range of specially designed configurations.



The automation unit LKB provides intelligent control of LKB butterfly valves used in all applications. This simple all-in-one actuator has superior flow control, hygiene, durability and reliability.



The Unique Single Seat Valves (SSV) are robust pneumatic seat valves, which are also highly reliable and versatile, available in an aseptic and two-step version, used for dosage.



Unique SSV reverse acting valve to be used in applications where the direction flow does not enable the use of a standard SSV Unique valve to eliminate the risk of pressure charge.



Small single seat valves to be used during sampling, CIP and other contexts in which only small volumes are involved.



SSV tank outlet valves, only for facilities that are open in the tank (reverse action version) or against the tank (standard version).



Y-body Unique SSV valves, to be used in installations involving large flows of particles and / or high viscosity, and where attention is focused on the careful handling of products and flows.



SSV long stroke valves are used where larger openings are required, providing softness and being more effective in controlling the flow, as in the case of installations with products containing particles and / or suspended solids and high viscosity flows.



Unique SSV tangential valves to be used when opening tanks, horizontal assembling of drains and where space is limited.



Unique SSV manually operated valves.



Sampling valves make it possible to obtain representative samples of food and beverages.

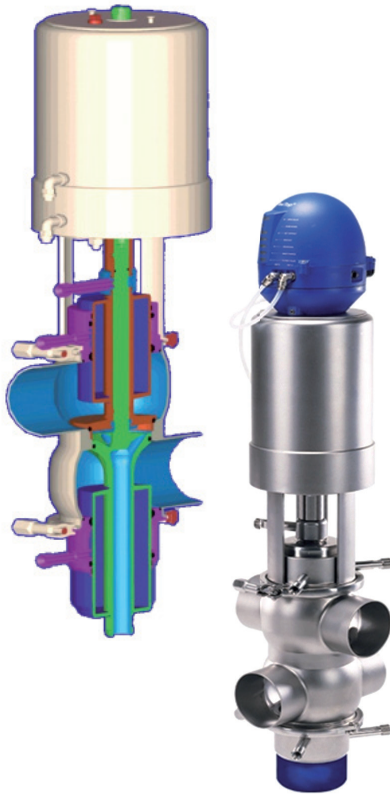


The compact radial diaphragm valve with double sealing system provides true aseptic conditions for sterile applications where leakage or cross-contamination is unacceptable.

CONTROL AND AUTOMATION



MIXPROOF (ANTIMÉLANGE)



Unique Mixproof

Unique Mixproof-T0

SMP-BC & SMP-BCA

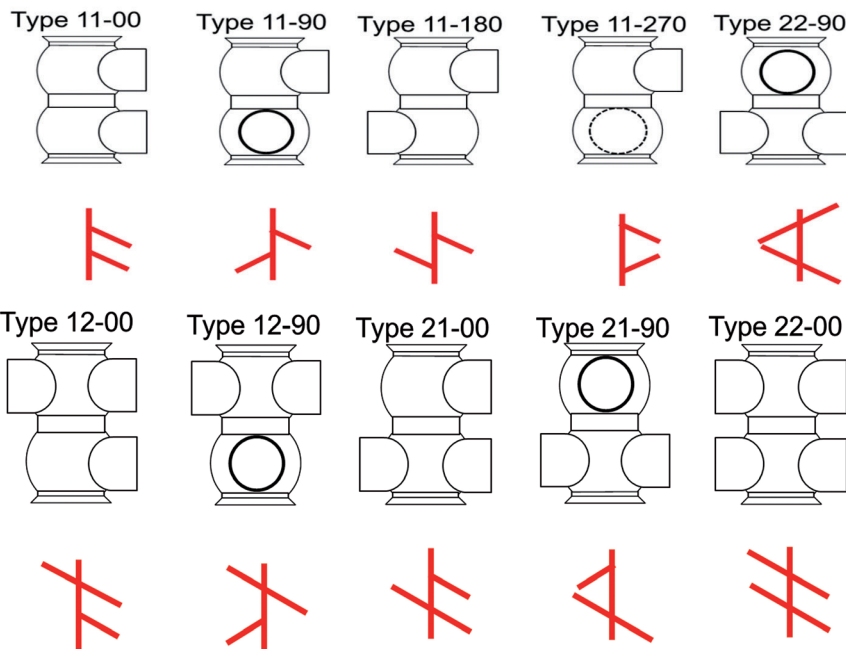


The exceptional design of the mixproof valve is characterized by its excellent and unmatched flexibility while maintaining its simplicity.

Its reliable modular design offers the perfect valve for your specific needs in all mixproof operations with two different products through a single valve. Unique fits your process! The unique quality of the mixproof valve is based on combining system specific features and functions drawn from a wide range of options offered.

- > AVOIDS ACCIDENTS
- > CONTROL THE DIRECTION
- > INDEPENDENT RAILS

BODY CONFIGURATION





Unique Basic
has the basic components to provide high security and guarantee the detection of leaks. Presents an actuator without seat elevation and unbalanced plugs.



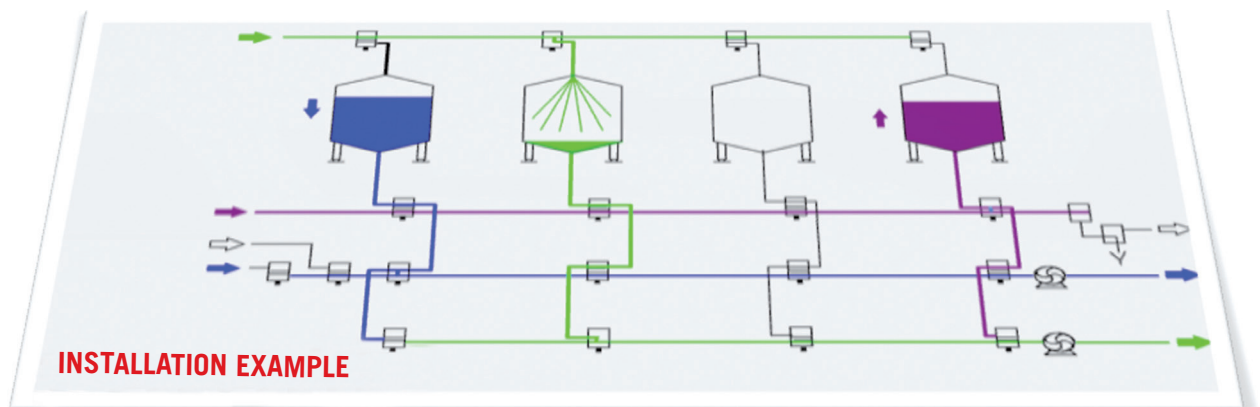
Unique Seat Clean
Is the standard solutions valve in order to treat products with solids. The elevation of the seat during normal cleaning process cleans the plugs and seats. A balanced lower plug discards the risk of product mixture due to high pressure shake in the tube.



Unique High Clean
Meets your processing needs when using adherent products. SpiralClean ensures the cleanliness of the axis, the upper and lower balanced plugs, and the valve configuration offers protection against high pressures and water hammer.

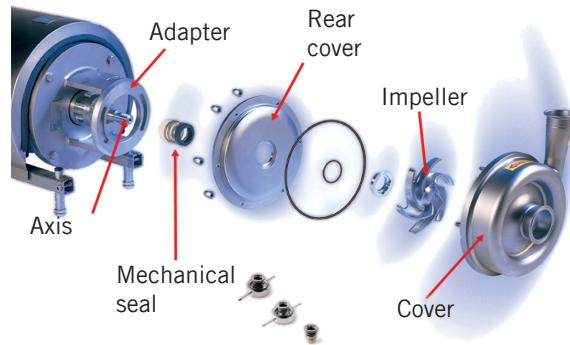


Unique Ultra Clean
covers the most demanding hygienic treatment needs in order to process adherent products with a high amount of solids or for applications in which conditions similar to the aseptic ones are desired. It has an actuator with integrated seat lift, balanced lower and upper plugs and SpiralClean.



For more information, contact our sales department.

LOBE AND CENTRIFUGAL PUMPS



CENTRIFUGAL PUMPS

Gentle product treatment

The recognition of our centrifugal pumps is due to its ability to move products in a delicate and effective way. The integrity of your product is guaranteed, whether you choose a high quality or standard application model.

Advanced hygienic design

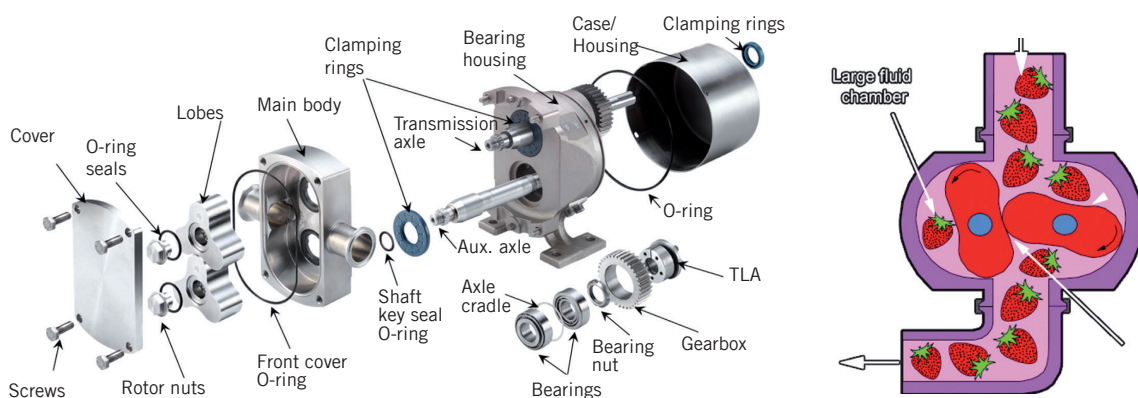
With the analysis focused on features such as optimized internal geometry and O-joint profiles, our centrifugal pumps are ideal for cleaning on site (CIP). We also offer exceptional levels of hygiene. They have all been tested according to EHEDG requirements and many of them have the proper authorization to take the 3A symbol.

Advanced sealing design

Many of our pumps share the same axial mechanical closure, which simplifies maintenance and spare parts inventory. Combined with a quick and easy front loading design, reduced maintenance costs are achieved, increasing working time and a reduction in the ownership cost.

Easy closing conversion

The external design of our centrifugal pumps, along with the closure extraction is designed to carry out the closure as quickly as possible. Our Premium LKH pumps convert seals into flush or double mechanical seals, while in the case of standard Solid C application pumps simple closures can be converted into axial levelled seals.



LOBE PUMPS

Lobe pumps are rotating pumps. The pumping is produced by two lobes which rotate in the opposite direction to drive the liquid to the space between the body and a lobe.

The effect is soft, with good acceptance for large particulate matter. This equipment is highly reliable and has low maintenance cost.




The pump range covers all needs for smooth and accurate pumping of all types of fluids of different viscosities during hygienic applications. Centrifugal pumps combine high efficiency with careful handling of goods. Positive displacement pumps are present in virtually all sectors in which a delicate health viscous process is required. The self-priming pumps are designed to pump liquids containing air or gas.


For more information, contact our sales department.




Alfa Laval i-Series

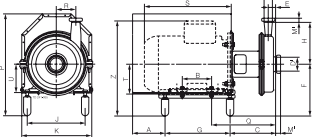



EXCLUSIVE DISTRIBUTOR:
Alfa Laval i-Series



Authorised Distributor







CERTIFIED
ehedg
TYPE EL
02/10/2019 2019

PERMANENT STOCK - IMMEDIATE DELIVERY - SPARE MECHANICAL SEALS



- > Initial competitive cost.
- > Operation curves identical to LKH.
- > Reduced manufacturing and optional costs.
- > Power Consumption LKH = i-CP2000.
- > The lowest energy consumption in the market.
- > Reductions of CO² emissions.

The centrifugal pump i-Series are suitable for most common tasks, since they ensure an effective but delicate liquid transfer.

These machines, which are a result of decades of experience in designing pumps, are easy to clean and require easier maintenance.

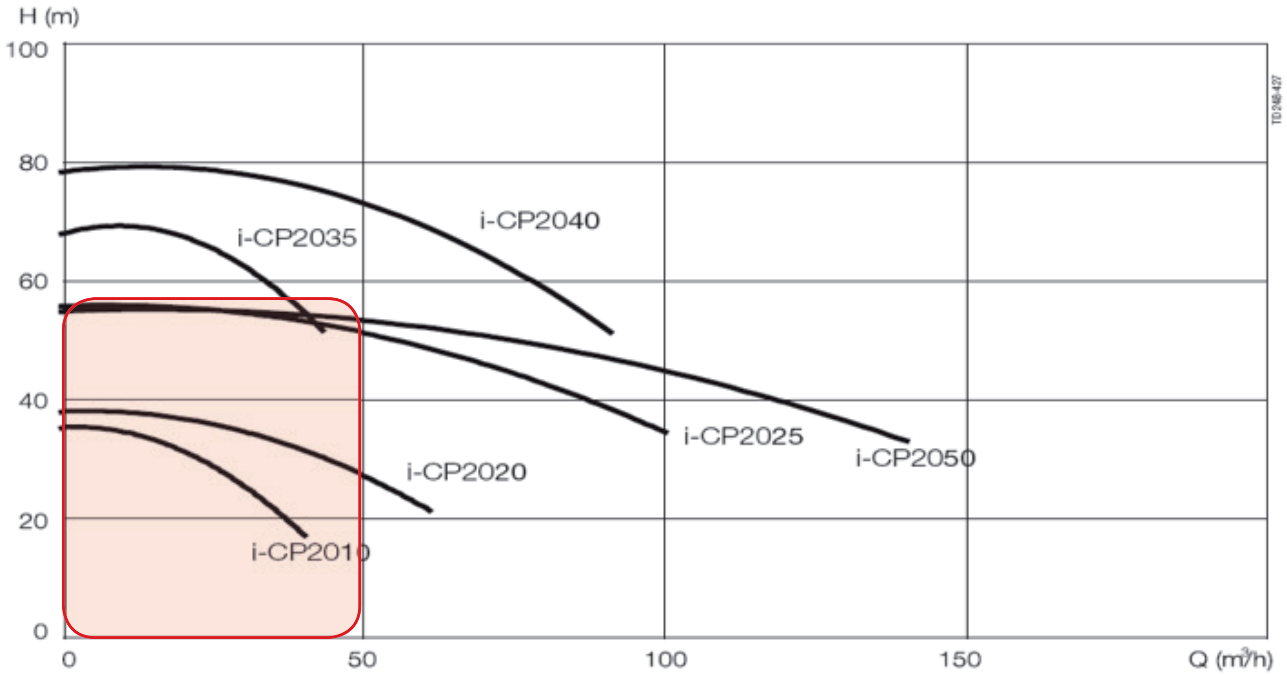
In addition, the cost of long-term ownership is reduced. They comply with EHEDG norms and their rubber parts are approved by the FDA.

They also have the same spiral boxes and the same impellers designed by the same computer that include our first category pump range.

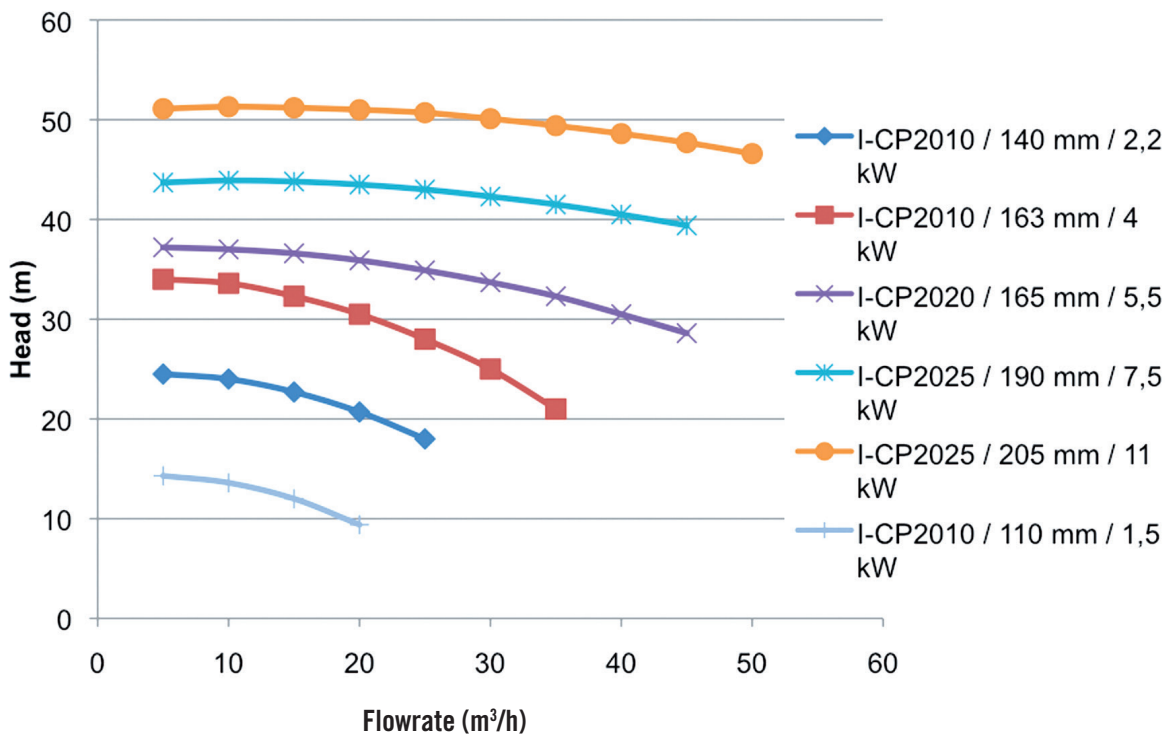
- Maximum flow of 140 m³/h.
- Maximum inlet pressure of 500 kPa (5 bar).
- All parts in contact with the product at 1.4404 (316 L).
- Energy saving engine: efficiency class 2 Alfa Laval.



Frequency: 50 Hz Speed (synchr): 3000 rpm



— Pump curves Pump range in stock



For more information, contact our sales department.

Plate Heat Exchangers

We sell a wide range of plate heat exchangers.

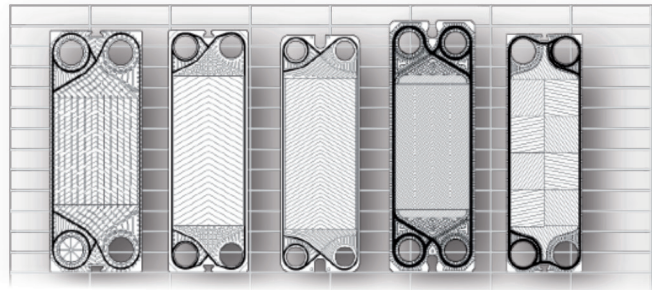
- Exchangers with joints.
- Welded and semi-welded plate exchanger.
- Fused exchangers.
- Welded plate exchangers using fusion.

The plate heat exchangers are composed of a set of assembled corrugated plates.

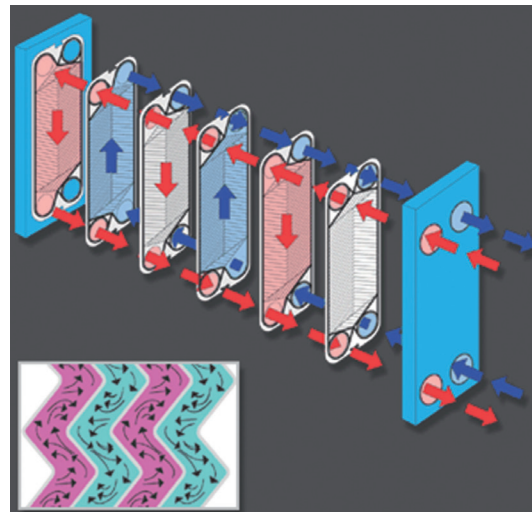
Between the plates there are two channels with a cold and a hot medium, they flow on each side of the plates and circulate against the current.

Joint plate heat exchangers cover a large number of applications, and are hermetically sealed with joints. Brazed heat exchangers have been developed to operate at high pressures and temperatures.

The welded plate heat exchanger are used to withstand pressures and even higher temperatures.



DIFFERENT TYPES OF PLATE, DEPENDING ON THE TYPE OF FLUID AND OTHER NEEDS

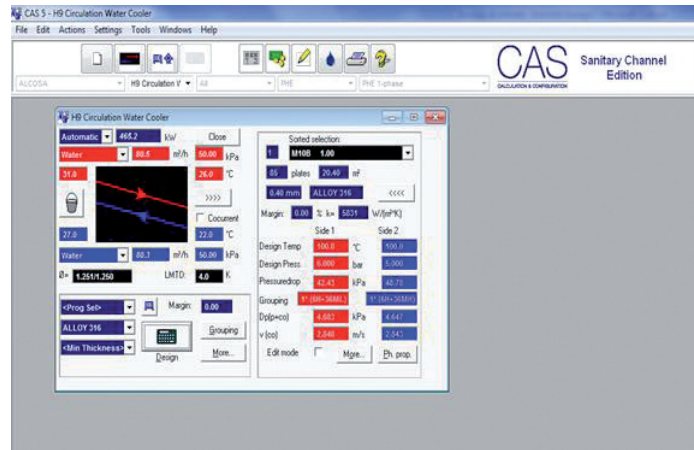


Consult our sales department for the full range of tubular exchangers we distribute.

Technical office

From the data supplied by the client we perform the calculations with the most advanced design programmes.

For each particular design, we develop and optimize the equipment, adapting it to its function, in the case of both exchangers and pumps.



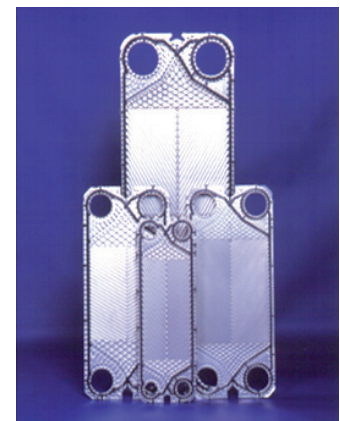
Spare parts and Maintenance

When it comes to replacement parts, there's nothing like the quality of the parts to increase productivity.

We offer all the spare parts of the equipment we supply.

We offer repair and maintenance service for both Alfa Laval workshops as well as the field.

- Plate cleaning.
- Joint replacement.
- Plate reconditioning.
- Etc.



For more information, contact our sales department.

Shakers and Mixers

We have the widest range of shakers and mixers in the market

- Propellers TRILIGHT, TRIVAK, ALABNET, ALABNET AXIAL, DOUBLE FLOW, ANCORA, ANCORA HELICOIDAL, TURBVAK, MULTVAK, MULFOLIVAK, COWLES, ...
- Turrets TD0, HT, TK, TK-TC.
- Mixing, dissolution, dispersion, emulsion, resuspension, homogenisation, heat exchange, ...
- Power: 0.18 to 110 kW.
- Sealing: seal, leakage seal, single mechanical seal, double, dry or lubricated.
- Industrial, sanitary or aseptic.
- Design in accordance with EHEDG and 3A.
- Security directive 2006/42/CE.
- Directive ATEX 94/9/CE.



Online mixers for all processes and productions

- Types: ALVAK, VISCOVAK, JETMIXVAK, LIVAK.
- Dissolving or dispersing of solids in powder or crystalline in liquid.
- Emulsion, dilution or mixing of fluids.
- Batch or continuous process.
- Power: 0.18 to 65 kW.
- Adding solids of up to 15,000 kg / h.
- Mixture flow of up to 90,000 l/h.
- Industrial, sanitary or aseptic.
- Low-cost range of online mixers LK.
- Design in accordance with EHEDG and 3A.
- Security directive 2006/42/CE.
- Directive ATEX 94/9/CE.



FILTERING - MICROFILTERING

GENERAL APPLICATIONS - CASES AND CARTRIDGES

- 1) Beer.
- 2) Bottled Water.
- 3) Refreshments.
- 4) Wine.
- 5) Auxiliary fluids (steam, compressed air, process water, etc.).



PRACTICAL EXAMPLES

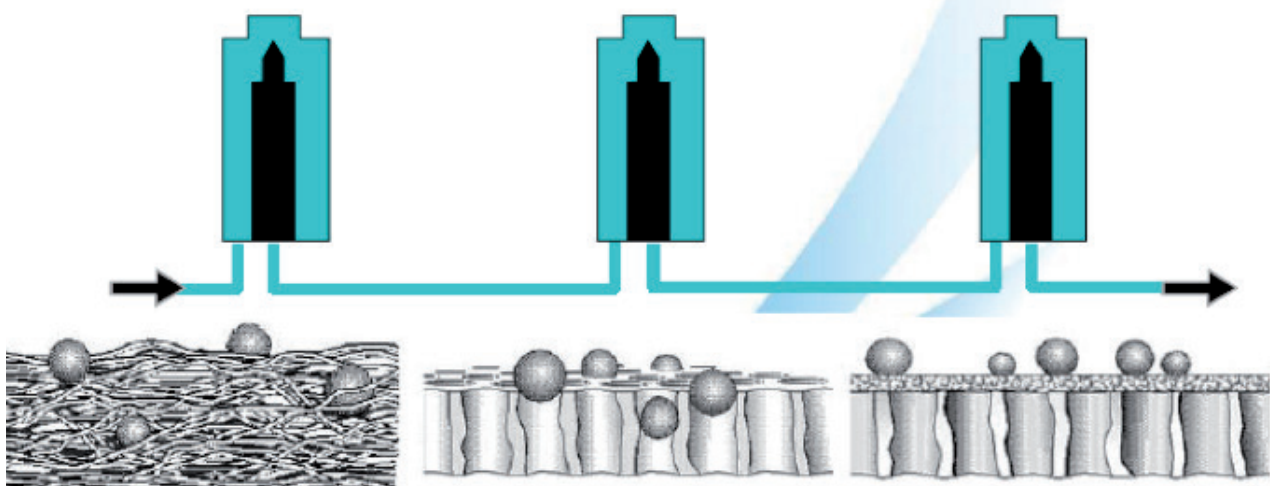
- Tank venting.
- Clarification of colonies.
- Air sterilization.
- Filler venting.
- Micro filtration of steam.
- Water sterilization.
- Etc.



Clearing

Pre-filtering

Final Filtering



For more information, contact our sales department.



Calle Camino del Olivar, 2 (Esquina Calle México)
28806 Alcalá de Henares, Madrid (SPAIN)
Tel.: (+34) 91 887 87 00 - Fax: (+34) 91 887 87 33
info@grupocunado.com
www.grupocunado.com

SPAIN

ANDALUCÍA: SEVILLA, HUELVA & ALGECIRAS (+34) 955.63.06.12 - andalucia@cunado.com
ARAGÓN: ZARAGOZA (+34) 976.18.52.58 - aragon@cunado.com
CANARIAS: LAS PALMAS & TENERIFE (+34) 928.70.05.00 - canarias@cunado.com
CASTILLA LA MANCHA: PUERTOLLANO (+34) 926.46.00.55 - clm@cunado.com
CASTILLA Y LEÓN: VALLADOLID (+34) 983.52.86.00 - ventascastillaleon@cunado.com
CATALUÑA: BARCELONA, GERONA & TARRAGONA (+34) 93.575.24.24 - cataluna@cunado.com
GALICIA: VIGO (+34) 986.34.26.06 - galicia@cunado.com
LEVANTE: VALENCIA & CARTAGENA (+34) 96.181.92.00 - levante@cunado.com
MADRID: (+34) 91.887.87.00 - madrid@cunado.com
NORTH: BILBAO & GIJÓN (+34) 94.453.31.54 - norte@cunado.com

INTERNATIONAL

CTA, LDA. (PORTUGAL): (+351) 217.995.280 - info@cta.pt
CUINTER (CHILE): (+56) 2.2787.0300 - mail@cunado.cl
CUÑADO ASIA CORPORATION (CHINA): (+86) 21.2024.8130 - info@cunadoasia.com
CUÑADO BOLIVIA: (+591) 3.3110683 - bolivia@grupocunado.com
CUÑADO BORU (TURKEY): (+90) 262.37.37.014 - info.turquia@grupocunado.com
CUÑADO CANADA: info.canada@grupocunado.com
CUÑADO COLOMBIA: (+51) 320.532.2498 - info.colombia@grupocunado.com
CUÑADO DUBAI (UAE): info.dubai@grupocunado.com
CUÑADO MEXICO: (+52) 55.5254.04.05 - cumex@prodigy.net.mx
CUPERSA (PERU): (+51) 141.662.00 - info@cupersa.pe
CUVENSА (VENEZUELA): (+58) 241.871.75.06 - finanzas@cuvensa.com
FLABOFORM GMBH (GERMANY): (+49) 7254 9271 0 - info@flaboform.de
ITF, INC. (USA): (+1) 713.952.4111 - itfinc@cunadousa.com
OMEGA INDUSTRIAL (USA): (+1) 225.749.9808 - info@omega-industrial.com
RAGENSА (PERU): (+51) 141.662.00 - info@cupersa.pe

