



# STAINLESS STEEL PIPE AND FITTINGS



# STAINLESS STEEL PIPE AND FITTINGS







## OUR RESOURCES

Our more than 265,000 m<sup>2</sup> of warehouse space spread across 18 locations in Spain and Portugal, including a valve factory, and our active presence in 15 countries, allow us to provide a comprehensive service in any part of the world.

The cutting-edge technology present in our departments enables us to verify stock, offers, etc., as well as schedule deliveries and inform our customers in a quicker and more reliable way.

Our special equipment and approved personnel conduct non-destructive testing, such as ultrasound, penetrating liquids, magnetic particles, PMI and hardness tests, in our facilities.

## OUR TEAM

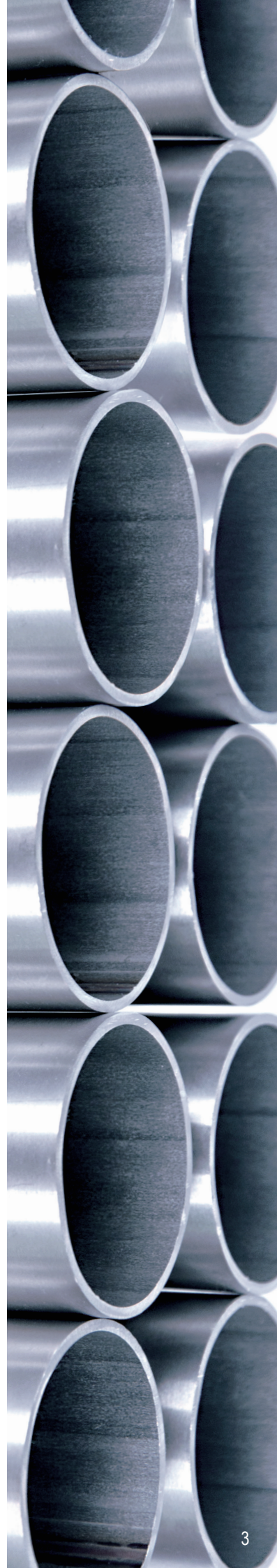
The qualified personnel and group of engineers in our Quality Department apply all their experience to the service of our customers with the purpose of collaborating the response to any inquiry or need. Our highly qualified and experienced personnel in the Procurement and Expediting Departments guarantee efficient assistance throughout the world with all types of supplies, providing solutions and adapting to the needs of our customers.

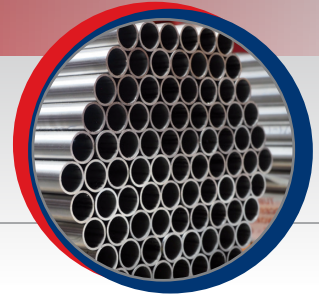
## OUR EXPERIENCE

**Over 50 years supplying special alloy and steel materials to the entire industry**, in accordance with ASME, ASTM, EN codes and standards, among others.

We constantly maintain an **Environmental Management System** and a **Quality Management System**, in accordance with ASME and ISO requirements, which have been approved by the main engineering and industry companies and supervisory bodies, as well as certified by Lloyd's Register Quality Assurance, according to ISO 9001 and ISO 14001 standards, respectively.

Occupational Risk Prevention (ORP) has become a strategic activity in any company's daily management, and, to this end, we have obtained the OHSAS 18001 certification with the purpose of reducing the health and safety risks within the working environment of our employees, customers and general public.





**PIPES**

- SEAMLESS
- WELDED
- PRECISION, CALIBRATED
- HOLLOW BAR
- FOR HEAT EXCHANGERS
- HYDRAULIC
- STRUCTURAL PROFILE:  
SQUARE AND RECTANGULAR
- FOR THE FOOD INDUSTRY  
WITH DIFFERENT SURFACE  
FINISHES
- FOR THE PHARMACEUTICAL  
INDUSTRY (ASME BPE- SF1)

DIAMETERS; FROM 1/8" TO 48"

**QUALITIES**

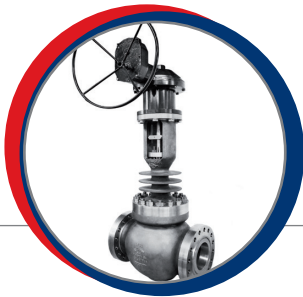
This catalog provides an introduction of our supply possibilities.

Please send your inquiries, even if they are about materials not included in this catalog.

**STANDARDS**

ASTM, ASME AND EN

OTHERS: DIN, AFNOR, BS AND UNE



**VALVES**

- GATE
- GLOBE
- NEEDLE
- CHECK
- SAFETY
- PLUG
- BUTTERFLY
- BALL
- KNIFE

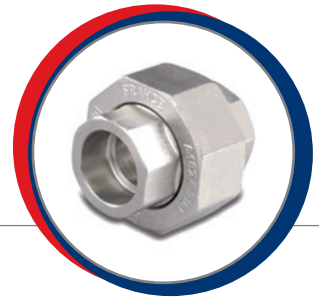
DIAMETERS: FROM 1/4" TO 60"



**FORGED OLETS**

- WELDOLETS
- SOCKOLETS
- THREDOLETS
- LATROLETS
- SWEPOLETS

DIAMETERS: FROM 3/8" TO 24"



**FORGED FITTINGS  
S.W. and THR.**

- 90° ELBOWS
- 45° ELBOWS
- TEES
- TEE BRANCHES
- CROSSES
- COUPLINGS
- HALF COUPLINGS
- REDUCERS
- MALE PLUGS
- CAPS
- NIPPLES
- SWAGE NIPPLES
- CONNECTIONS

DIAMETERS: FROM 1/8" TO 4"





### FITTINGS FOR BUTT WELDING

- 90° AND 45° ELBOWS
- EQUAL AND REDUCING TEES
- TEE BRANCHES
- CONCENTRIC AND ECCENTRIC REDUCERS
- CAPS
- SPECIAL RADIUS BENDS
- CROSSES
- COLLARS, STUBENDS AND FLANGES

DIAMETERS: FROM 1/2" TO 48"



### FORGED FLANGES

- WELDING NECK (WN)
- SLIP ON (S.O)
- SOCKET WELD (SW)
- BLIND (BL)
- LAP JOINT (LJ)
- THREADED (THR)
- ORIFICE
- LONG WELDING NECK (LWN)
- LARGE DIAMETERS
- T.E.M.A. FLANGES

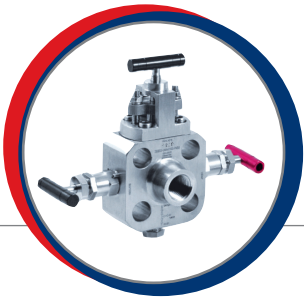
DIAMETERS: FROM 1/2" TO 48"



### FOOD AND PHARMACY FITTINGS AND EQUIPMENT

- 45°, 90° AND 180° FOOD ELBOWS, IN DIFFERENT STANDARDS
- ASME BPE STANDARD ELBOWS (PHARMACY)
- BORING AND WELDING FITTINGS
- FOOD TEES (EQUAL AND REDUCING)
- ASME BPE STANDARD TEES (PHARMACY)
- CROSSES
- TUBULAR AND FLAT SIGHT GLASSES
- CLAMPS AND SUPPORTS
- CONCENTRIC AND ECCENTRIC REDUCERS
- BUTTERFLY VALVES
- SINGLE SEAT VALVES
- MIXPROOF VALVES
- FLUID CONTROL VALVE
- PUMPS (CENTRIFUGAL AND LOBULAR)
- FILTERS (ANGULAR AND STRAIGHT)
- EQUIPMENT FOR TANKS (AGITATORS, CLEANING HEADS, ETC.)
- FOOD HEAT EXCHANGERS (PLATE AND TUBULAR TYPE)
- TUBULAR HEAT EXCHANGERS FOR PHARMACY
- FULL RANGE OF CLAMPS (FOOD AND PHARMACY)
- CONTROL HEADS (AISI AND DIGITAL)

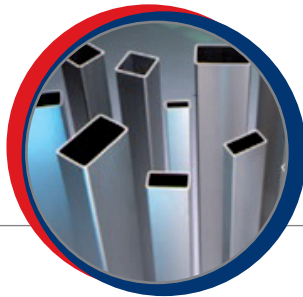
DIAMETERS: FROM 1/2" TO 4" (ALL DIAMETERS)



### INSTRUMENTATION FITTINGS AND VALVES

- NUTS
- FRONT RINGS
- REAR RINGS
- MALE TO FEMALE CONNECTION
- CONNECTORS: BULKHEAD, ELBOW, TEE
- MALE ELBOW
- MALE TEE
- REDUCER CONNECTOR
- FEMALE ELBOW
- PIPE CAP
- REGULATION VALVE
- SHUT-OFF VALVE
- MANIFOLDS
- STRAIGHT-THROUGH VALVE
- 2-4 WAY BALL VALVE

DIAMETERS: FROM 1/4" TO 3/4"



### PLATES, BARS AND PROFILES

- FLAT BARS
- ANGLES
- SQUARE
- ROUND
- HEXAGONAL

SPECIAL PARTS FROM CUSTOMER BELOW LINE





## STAINLESS

### AISI GRADES

AUSTENITIC			FERRITIC	
201	316	MT 403	405	MT 405
202	316 H	MT 410	409	MT 429
302	316 L	MT 414	429	MT 430
304	316 LN	MT 416 Se	430	MT 443
304 L	317	MT 431	430 -Ti	MT 446
304 LN	317 L	MT 440 A	443	XM 8
304 H	321	XM 10	444	29-4
304 N	321 H	XM 11	446	29-4-2
305	347	XM 15		
309 S	347 H	XM 19		
310 S	348	XM 29		

### ASTM Standards\*

**PIPES:** A-213, A-249, A-268, A-269, A-270, A-312, A-358, A-376, A-409, A-511, A-632, A-688, A-789, A-790, A-803

**BW FITTINGS:** A-403

**FORGED:** A-182, A-473

**FLANGES:** A-182

**PLATES:** A-240

**BARS:** A-314

## MONEL

### GRADES UNS WERKSTOFF NO.

400	N04400	2.4360
R405	N04405	-
K500	N05500	2.4375

### ASTM Standards\*

**PIPES:** B-163, B-165, B-730, B-725

**BW FITTINGS:** B-366

**FORGED:** B-564

**FLANGES:** B-564

**PLATES:** B-127

**BARS:** B-164

## INCONEL

### GRADES UNS WERKSTOFF NO.

600	N06600	2.4816
601	N06601	2.4851
617	N06617	2.4663
625	N06625	2.4856
671	-	-
716	-	-
718	N07718	2.4668
X 750	N07750	2.4669

### ASTM Standards\*

GRADE	PIPE	PLATE	BAR	FORGED	BW FITTING
	B-517				
600	B-516	B-168	B-166	B-564	B-366
	B-163				
	B-167				
625	B-444	B-443	B-446		
X-750				B-637	B-637
718				B-637	B-637

## COPPER

### UNS GRADES

C10100	C12200	C16500
C10200	C12300	C17000
C10300	C12500	C17200
C10400	C12700	C17300
C10500	C12800	C17500
C10700	C12900	C17600
C10800	C13000	C17700
C11000	C14100	C18200
C11100	C14200	C18400
C11300	C14300	C18500
C11400	C14500	C18700
C11500	C14700	C18900
C11600	C15000	C19000
C11700	C15500	C19100
C12000	C16200	
C12100	C16400	

### ASTM Standards\*

**PIPES:** B-42, B-75, B-68, B-88, B-111, B-280, B-302, B-306, B-359, B-360, B-395, B-447, B-543

**PLATES:** B-152

**BARS:** B-124, B-187

## COPPERNICKEL

### GRADES UNS WERKSTOFF NO.

95/5	C70400	-
90/10	C70600	2.0872
80/20	C71000	-
70/30	C71500	2.0882

### ASTM Standards\*

**PIPES:** B-111, B-359, B-395, B-466, B-467, B-552

**PLATES:** B-171, B-122

**BARS:** B-151, B-411

## SUPERALLOYS

### TRADE NAME UNS WERKSTOFF NO.

904L/	N08904	1.4539
URANUS	N08926	1.4529
6M0	N08028	1.4563
SANICRO 28		

### ASTM Standards\*

**PIPES:** B-673, B-674, B-677, B-668

**BW FITTINGS:** B-366

**PLATES:** B-625, B-709

**BARS:** B-472, B-649

\* Most common ASTM standards



## INCOLOY

GRADES	UNS	WERKSTOFF NO.
800 L	N08800	1.4558
800	N08810	1.4876
800 H	N08810	1.4876
801	-	-
802	-	-
825	N08825	2.4858
DS	N08330	1.4864

### ASTM Standards\*

GRADE	PIPE	PLATE	BAR	FORGED	BW FITTING
800	B-626				
	B-515				
	B-514	B-409	B-408	B-564	B-366
	B-407				
	B-163				
825	B-423	B-424	B-425		
	B-163				

## HASTELLOY

GRADES	UNS	WERKSTOFF NO.
B	-	-
B2	N10665	2.4617
C4	N06455	2.4610
C276	N10276	2.4819
G	N06007	2.4618
X	N06002	2.4665
G3	N06985	2.4619

### ASTM Standards\*

GRADE	PIPE	PLATE	BAR	FORGED	BW FITTING
B	B-626				
	B-619	B-333		B-335	B-366
	B-622				
	B-619				
C					
X				B-572	
			B-435	ASME	
				CASE: 1321 / 3	

## NICKEL

GRADES	UNS	WERKSTOFF NO.
200	N02200	2.4066
201	N02201	2.4068

### ASTM Standards\*

**PIPES:** B-163, B-161, B-730, B-725  
**BW FITTINGS:** B-366  
**FLANGES:** B-564  
**PLATES:** B-162  
**BARs:** B-160

## DUPLEX / SUPERDUPLEX

### UNS GRADES

S31803	S39274	J93183
S31500	S32750	J93550
S32550	S32760	
S31200	S32900	
S31260	S32950	
S32304	S39277	

### ASTM Standards\*

**PIPES:** A-789, A-790, A-872, A-928, A-949  
**BW FITTINGS:** A-815  
**FORGED:** A-182, A-473  
**FLANGES:** A-182  
**PLATES:** A-240  
**BARs:** A-479

## TITANIUM

GRADES	UNS	WERKSTOFF NO.
1	-	3.7025
2	-	3.7035
3	-	3.7055
4	-	3.7065
5	-	3.7165
6	-	-
7	-	3.7035Pd
8	-	-
9	-	-
11	-	-
12	-	TiCode 12

### ASTM Standards\*

**PIPES:** B-338, B862  
**BW FITTINGS:** B-363  
**FORGED:** B-381  
**FLANGES:** B-348  
**PLATES:** B-265  
**BARs:** B-348

## ALUMINUM

### UNS GRADES

1060	5454
1100	5456
2014	6061
3003	6062
5052	6063
5083	7072
5086	
5154	

### ASTM Standards\*

**PIPES:** B-210, B-234, B-241  
**FORGED:** B-247  
**FLANGES:** B-209  
**BARs:** B-221





Calle Camino del Olivar, 2 (Esquina Calle México)  
28806 Alcalá de Henares, Madrid (SPAIN)  
Tel.: (+34) 91 887 87 00 - Fax: (+34) 91 887 87 33  
info@grupocunado.com

## SPAIN

**ANDALUCIA:** SEVILLA, HUELVA & ALGECIRAS (+34) 955.63.06.12 - andalucia@cunado.com

**ARAGON:** ZARAGOZA (+34) 976.18.52.58 - aragon@cunado.com

**CANARIAS:** LAS PALMAS & TENERIFE (+34) 928.70.05.00 - canarias@cunado.com

**CASTILLA LA MANCHA:** PUERTOLLANO (+34) 926.46.00.55 - clm@cunado.com

**CASTILLA Y LEON:** VALLADOLID (+34) 983.52.86.00 - ventascastillaleon@cunado.com

**CATALUÑA:** BARCELONA, GERONA & TARRAGONA (+34) 93.575.24.24 - cataluna@cunado.com

**GALICIA:** VIGO (+34) 986.34.26.06 - galicia@cunado.com

**LEVANTE:** VALENCIA & CARTAGENA (+34) 96.181.92.00 - levante@cunado.com

**MADRID:** (+34) 91.887.87.00 - madrid@cunado.com

**NORTE:** BILBAO & GIJON (+34) 94.453.31.54 - norte@cunado.com

## INTERNATIONAL

**CTA, LDA. (PORTUGAL):** (+351) 217.995.280 - info@cta.pt

**CUINTER (CHILE):** (+56) 2.2787.0300 - mail@cunado.cl

**CUÑADO ASIA CORPORATION (CHINA):** (+86) 21.2024.8130 - info@cunadoasia.com

**CUÑADO SINGAPUR:** yiguo.zeng.cas@cunadoasia.com

**CUÑADO BOLIVIA:** (+591) 3.3110683 - bolivia@grupocunado.com

**CUÑADO BORU (TURKEY):** (+90) 262.37.37.014 - info.turkey@grupocunado.com

**CUÑADO CANADA:** info.canada@grupocunado.com

**CUÑADO COLOMBIA:** (+51) 320.532.2498 - info.colombia@grupocunado.com

**CUÑADO DUBAI (UAE):** info.dubai@grupocunado.com

**CUÑADO FRANCE:** + 33 (0) 603 71 19 77 - info.france@grupocunado.com

**CUÑADO MEXICO:** (+52) 55.5254.04.05 - cumex@prodigy.net.mx

**CUPERSA (PERU):** (+511) 416 62 00 Anexo 101 - info@grupocunado.pe

**CUVENSА (VENEZUELA):** (+58) 241.871.75.06 - finanzas@cuvensa.com

**CUÑADO CENTRAL EUROPE (GERMANY):** (+49) 7254 9271 0 - info@flaboform.de

**CUÑADO POLAND:** (+48) 32 32913 68 - info@flaboform.pl

**CUÑADO CZECH REP.:** (+420) 596 6335 18 - info@flaboform.cz

**ITF, INC. (USA):** (+1) 713.952.4111 - itfinc@cunadousa.com

**OMEGA INDUSTRIAL (USA):** (+1) 225.749.9808 - info@omega-industrial.com

**RAGENSA (PERU):** (+511) 416 62 00 Anexo 101 - info@grupocunado.pe

www.grupocunado.com

